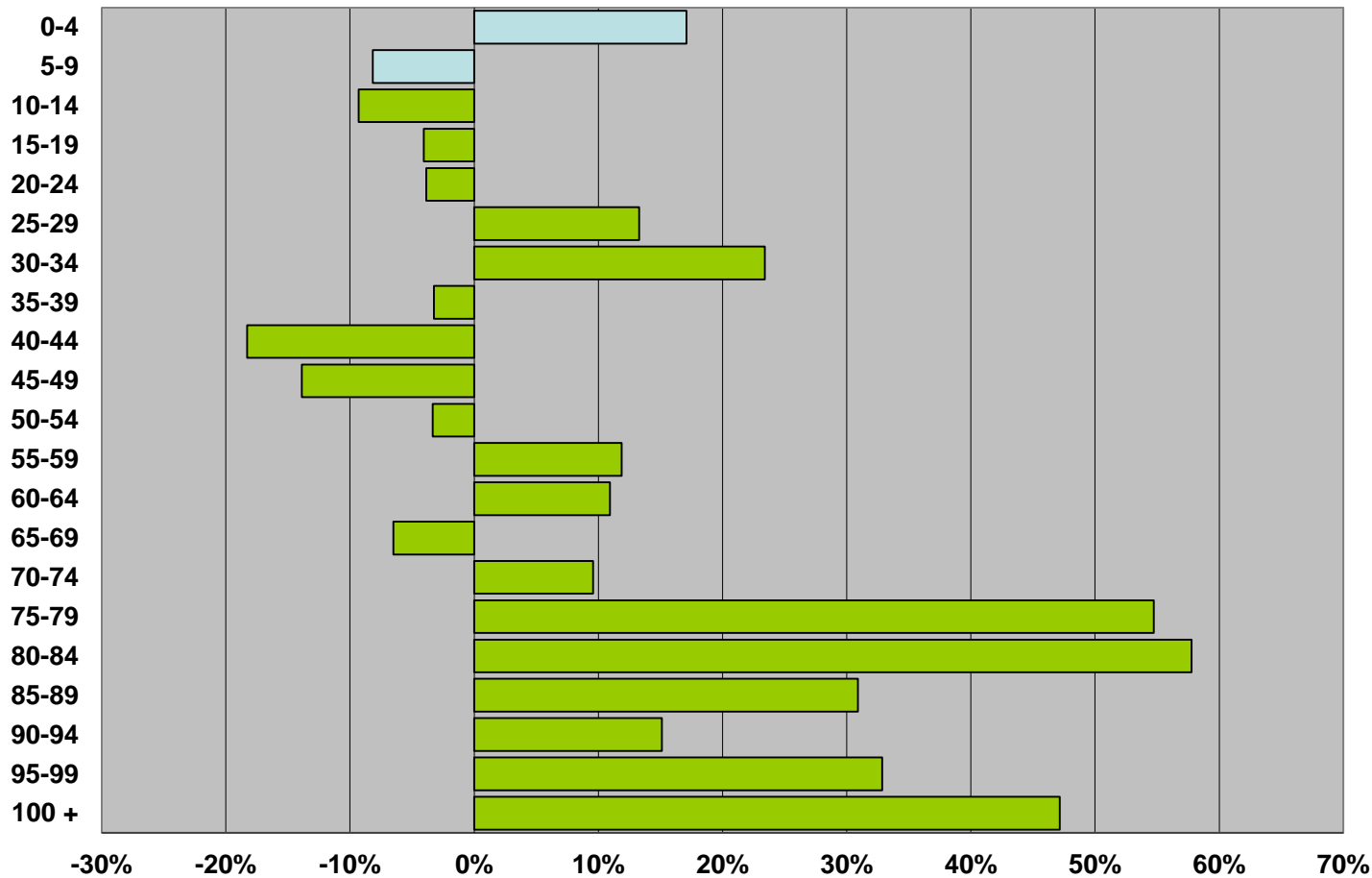


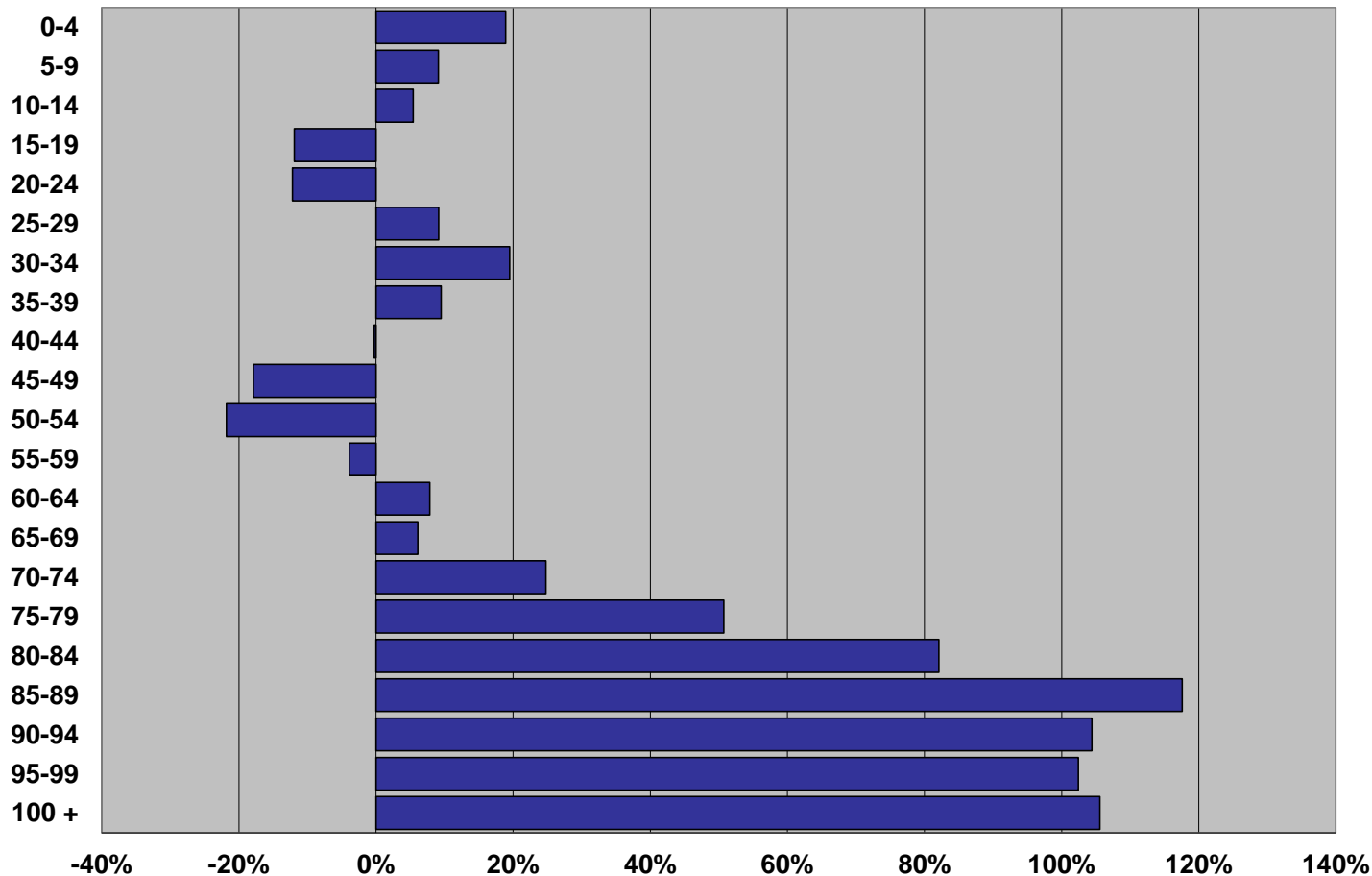
# Befolkningsudviklingen

Danmark 2015-2025



# Befolkningsudviklingen

Danmark 2015-2035



# Demografi Danmark

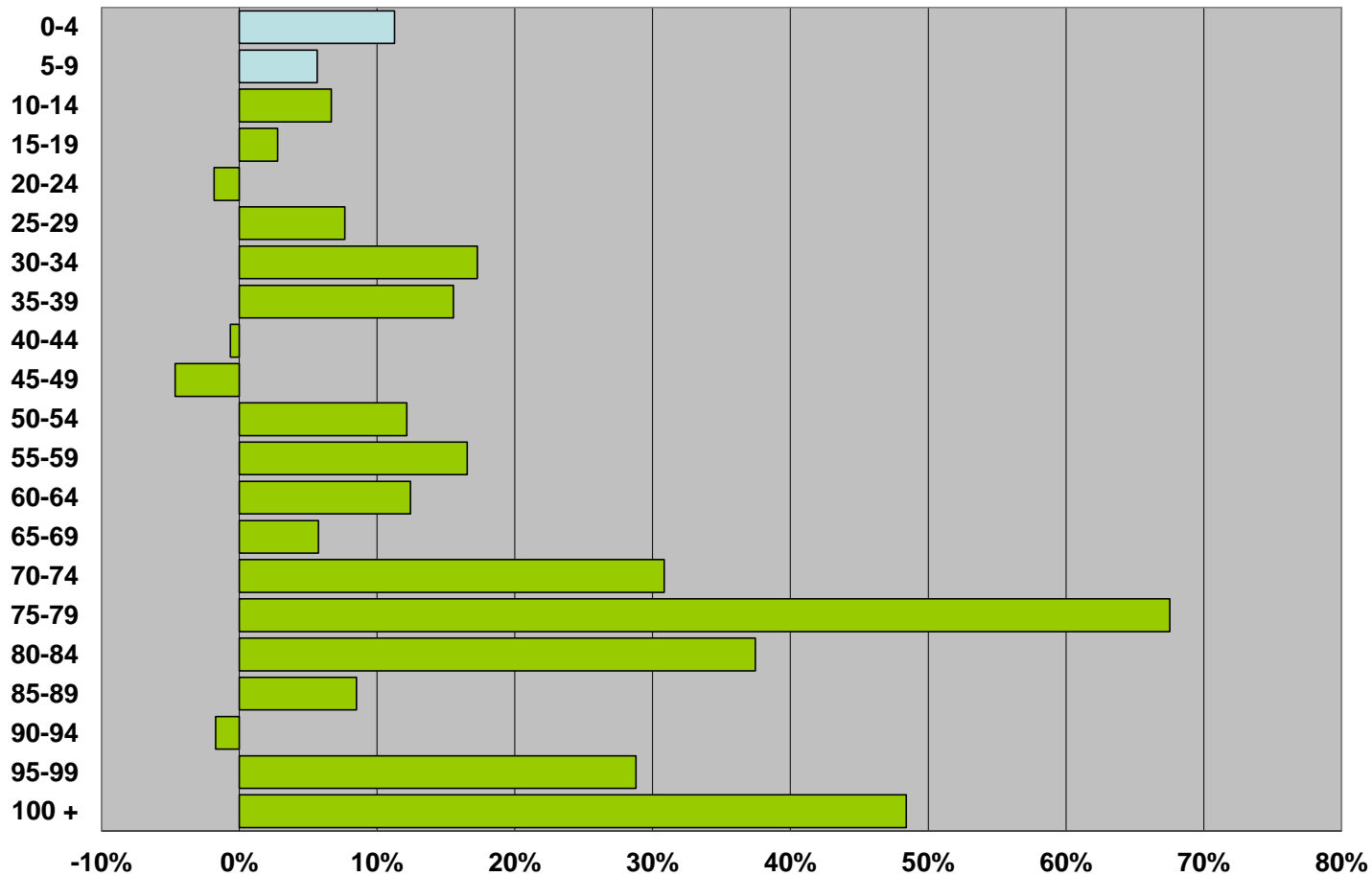
## Absolutte tal 2015-2035



	2015	2025	Ændring	2035	Ændring
0-9	627372	651288	23916	713704	86332
10-19	684627	639410	-45217	660829	-23798
20-29	722233	753573	31340	707872	-14361
30-39	675885	738708	62823	771951	96066
40-49	801614	673159	-128455	726866	-74748
50-59	750107	779115	29008	650301	-99806
60-69	688754	702663	13909	736674	47920
70-79	459645	587750	128105	621843	162198
80-89	195891	289093	93202	383087	187196
90 +	42465	50603	8138	86657	44192
I alt	5.648.593	5.865.362	216.769	6.059.784	411.191

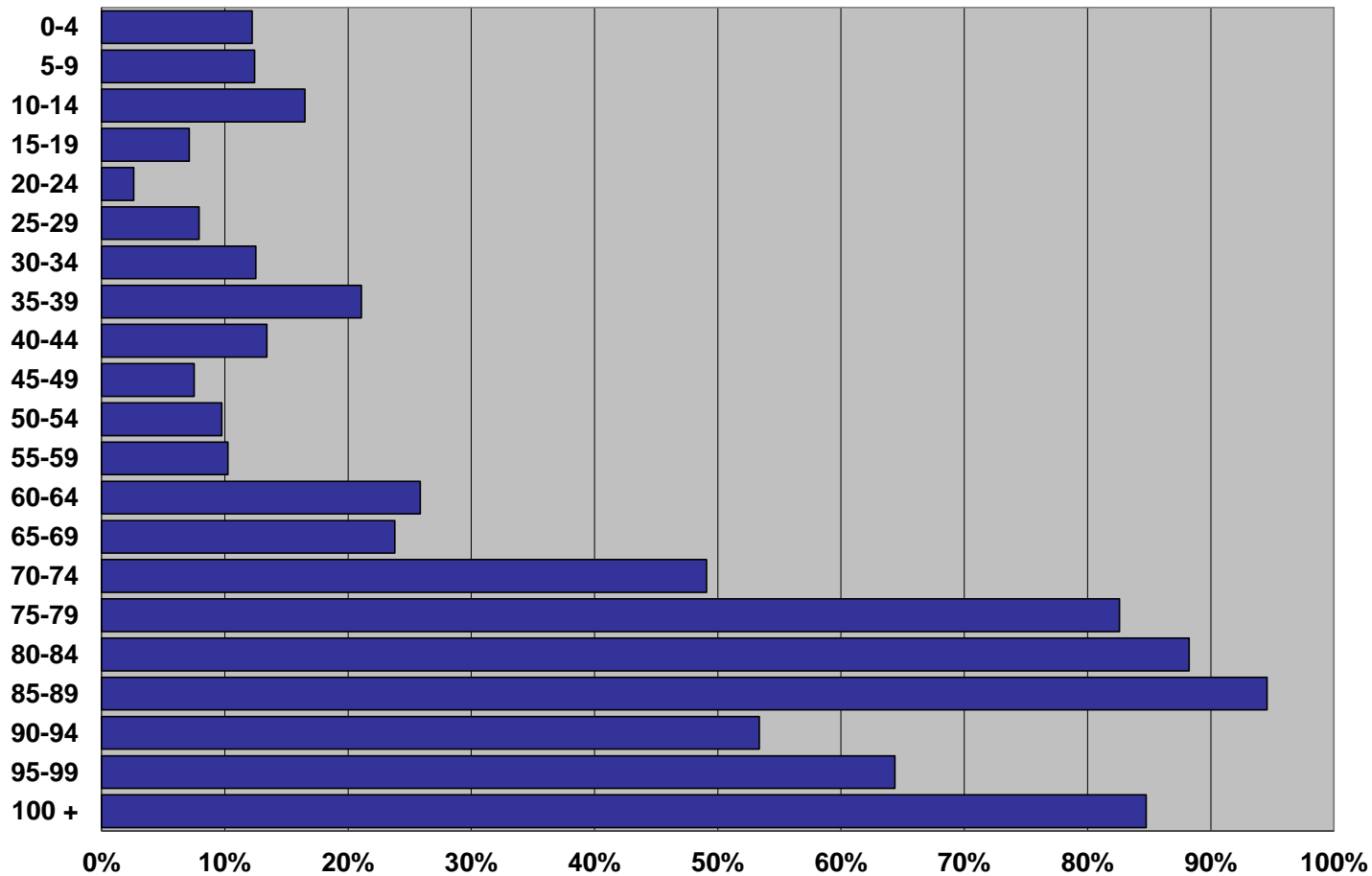
# Befolkningsudviklingen

Norge 2015-2025



# Befolkningsudviklingen

Norge 2015-2035



# Demografi Norge

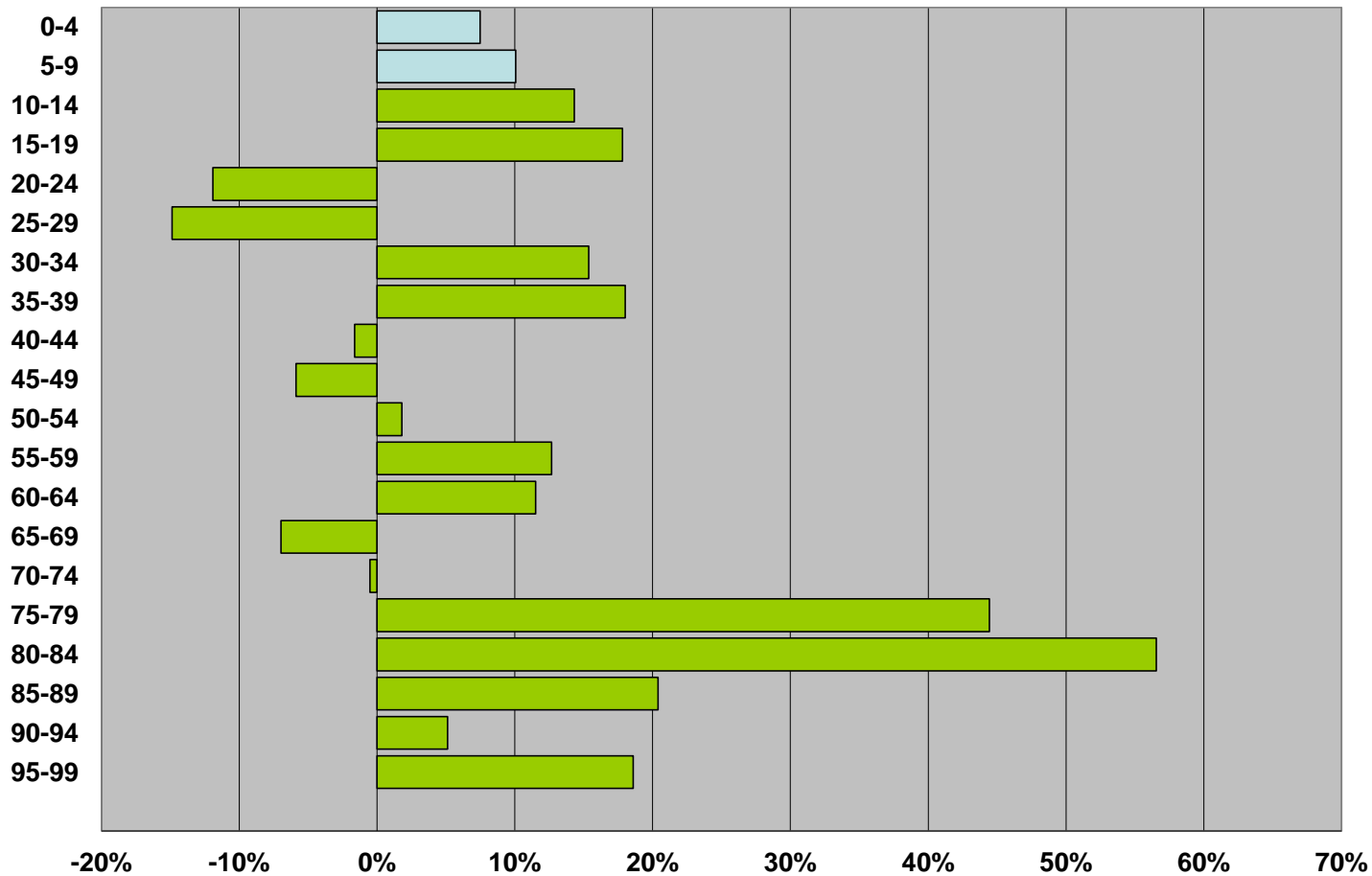
## Absolutte tal 2015-2035



	2015	2025	Ændring	2035	Ændring
0-9	626366	679104	52738	703571	77205
10-19	634864	664531	29667	708903	74039
20-29	697327	718023	20696	734198	36871
30-39	688864	801971	113107	804450	115586
40-49	747435	727533	-19902	825736	78301
50-59	652302	745466	93164	717501	65199
60-69	564860	616469	51609	705205	140345
70-79	335886	490533	154647	547358	211472
80-89	176321	221777	45456	336401	160080
90 +	43249	45208	1959	67413	24164
I alt	5.167.474	5.710.615	543.141	6.150.736	983.262

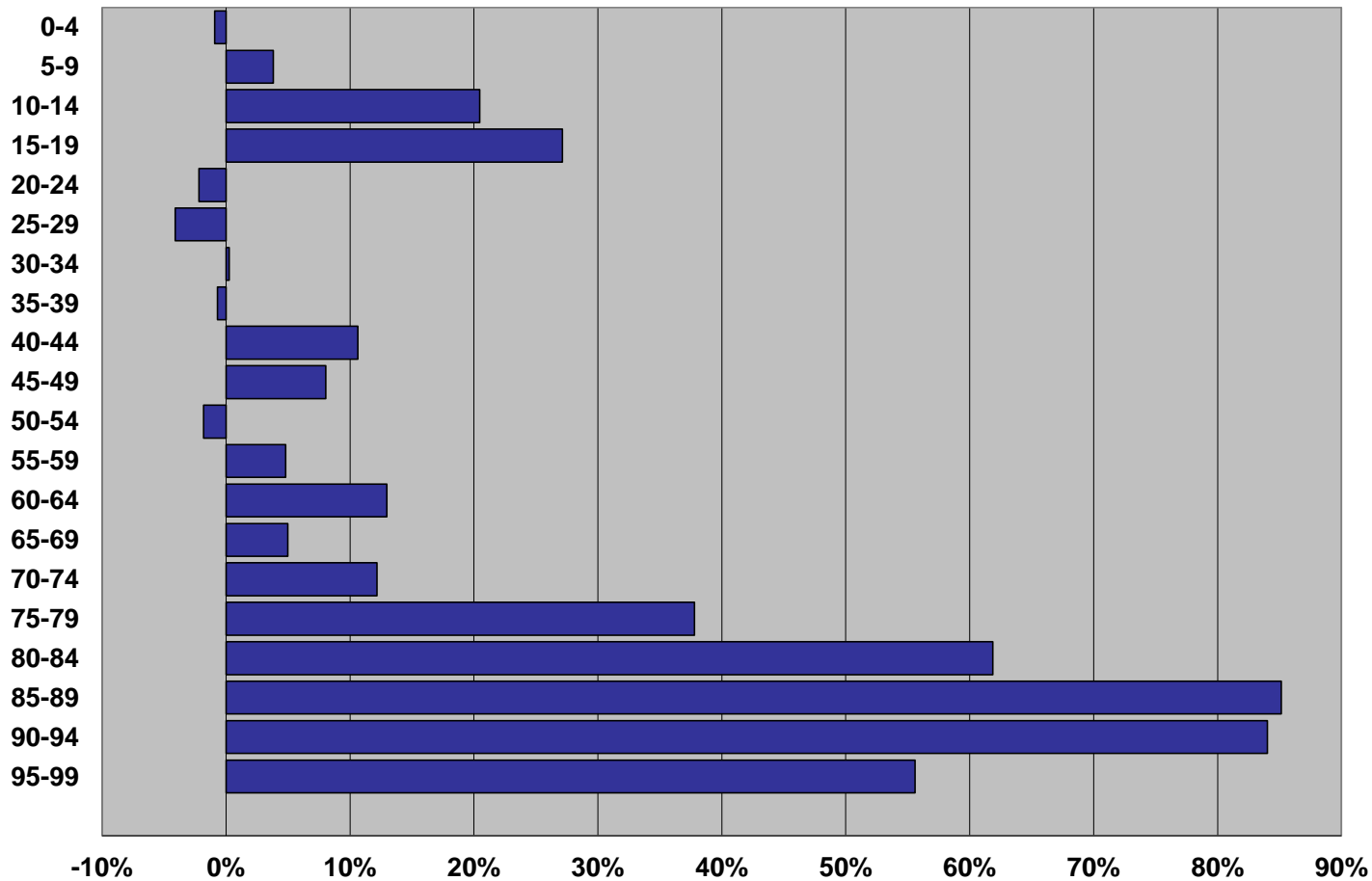
# Befolkningsudviklingen

Sverige 2015-2025



# Befolkningsudviklingen

Sverige 2015-2035





# Demografi Sverige

## Absolutte tal 2015-2035



	2015	2025	Ændring	2035	Ændring
0-9	1175689	1278684	102995	1192597	16908
10-19	1055226	1224412	169186	1305730	250504
20-29	1342171	1161875	-180296	1299793	-42378
30-39	1231672	1437028	205356	1228908	-2764
40-49	1314903	1265270	-49633	1437701	122798
50-59	1224047	1309050	85003	1240338	16291
60-69	1149626	1172828	23202	1251661	102035
70-79	857018	1007901	150883	1049783	192765
80-89	404321	574521	170200	692080	287759
90 +	96239	103925	7686	171272	75033
I alt	9.850.912	10.535.494	684.582	10.869.863	1.018.951